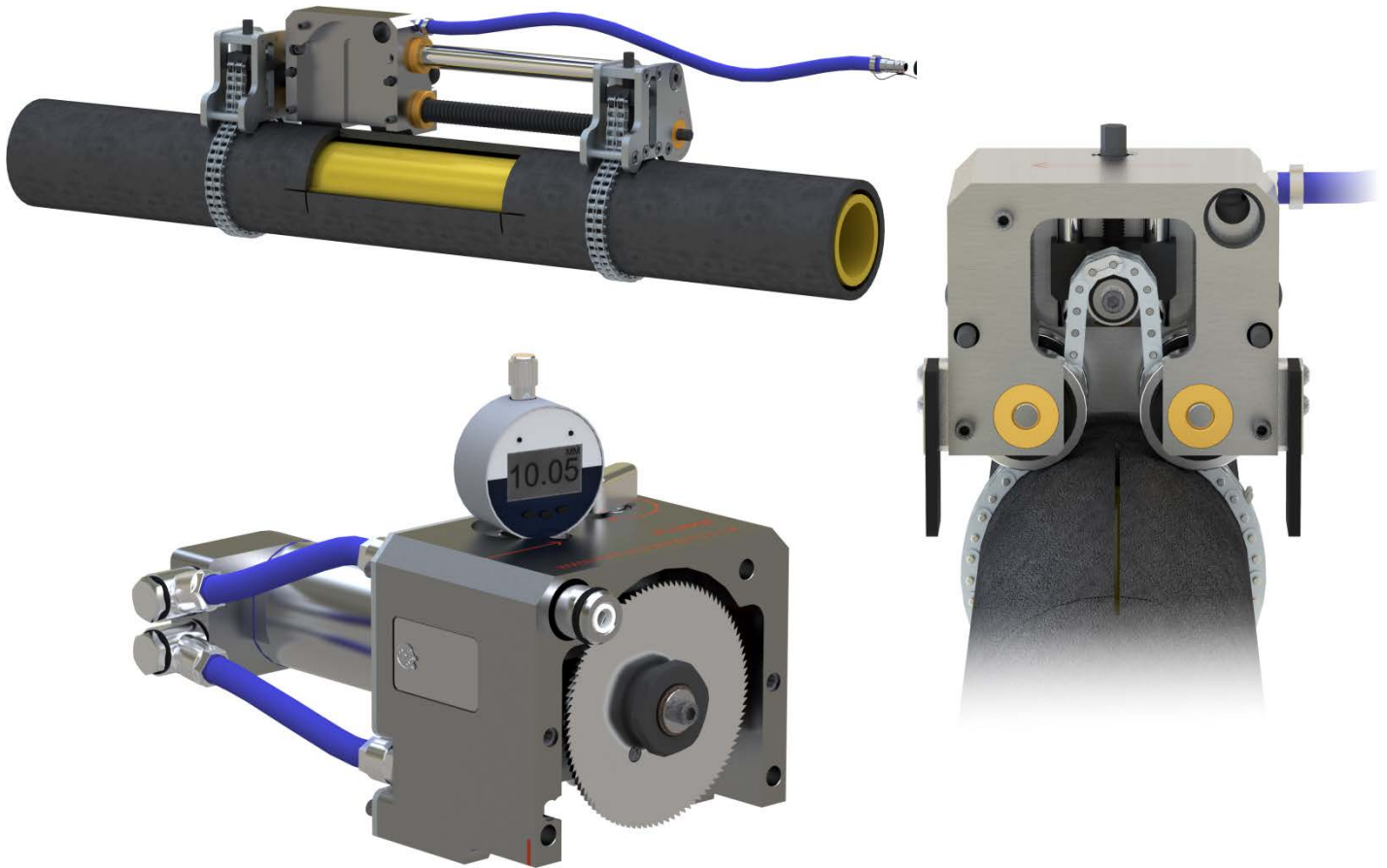


Kent Precision Window Cutter



Parts Catalog



PARTS CATALOG

Safety Warnings

- Always use the Kent Precision Window Cutter in a tidy environment; this will reduce the risks of accidents.
- Make sure the environment that you are working in is safe. You will not be able to monitor potential hazards while concentrating on using the Kent Precision Window Cutter.
- This equipment generates hazardous levels of noise, when in operation wear ear protectors.
- Keep any unnecessary persons from the area while using the Kent Precision Window Cutter.
- When not in use return the Kent Precision Window Cutter to its packaging and store in a secure place.
- If in doubt about the suitability of this product for a situation contact PLCS Inc. for further information.
- Always wear appropriate Personal Protective Equipment (PPE) and apparel, consult the manual or experienced health and safety adviser for further information.
- In situations where material from the cut may become airborne, consult your health and safety adviser in regards to potential health hazards.
- Do not abuse the Kent Precision Window Cutter, misuse can lead to accidents.
- Do not use on a pipe not within the Kent Precision Window Cutters specification. Using this tool outside of its design limits may not provide the results expected or maybe dangerous. Consult our technical department for further information.
- Always disconnect the Kent Precision Window Cutter and its accessories from the compressed air supply when not in use to prevent accidental operation.
- Always remove all detachable accessories and tools from the Kent Precision Window Cutter when not in use.
- Always check for damage to the Kent Precision Window Cutter and its accessories. If any damage is found return the item for repair, the use of non-standard items or accessories may present a risk of personal injury.
- Before and after every use check pressurised pipes for signs of damage or deterioration. Replace any faulty items before use.
- Ensure the compressed air supply is compatible with the tooling requirement.
- Compressed air can cause injury to the body. Examples include entry into orifices, penetration of the skin and air contaminated with swarf being blow onto eyes or skin.
- Never operate the cutter with a cracked, damaged or worn blade.
- Do not remove swarf with your bare hands.
- Disconnect all included tools from the air supply before changing accessories, servicing or performing any maintenance. De-pressurise the tool before removing the air hose.
- Maintain the Kent Precision Window Cutter and its accessories in good condition. Contact PLCS Inc. for genuine replacement parts.
- Replace or repair damaged parts. Use genuine parts only. Non-genuine parts may be dangerous and will invalidate the warranty.
- Only use the tools for their expressed purposes.
- Use a face or dust mask if dust is generated. Wear appropriate protective clothing.
- Remove ill-fitting clothes, ties, watches, rings and other loose jewelry. Contain or tie back long hair.
- Keep children and unauthorised persons away from the working area.
- WARNING! air pressure should not exceed 7 bar.
- Keep air hoses away from heat, oil and sharp edges. Check air hose for wear before each use, and ensure that all connections are secure.
- DO NOT operate any of the tools or accessories if any parts are damaged or missing as may cause failure or personal injury.
- DO NOT carry the window cutter by the hose, or yank the hose from the air supply.
- DO NOT allow untrained persons to operate these tools.
- DO NOT operate these tools when you are tired, under influence of alcohol, drugs or intoxicating medication.
- DO NOT defeat safety valves or features.
- DO NOT direct air from the blow gun at yourself, others or animals.
- DO NOT operate this tool unless attached to the pipe and all preparations have been carried out to a satisfactory manner
- When not in use disconnect from the air supply and store in a safe, dry, childproof area.





PARTS CATALOG

Maintenance

Maintenance of the Kent Cutter is very important. It should be stored in a dry place and be free from dirt and other materials.

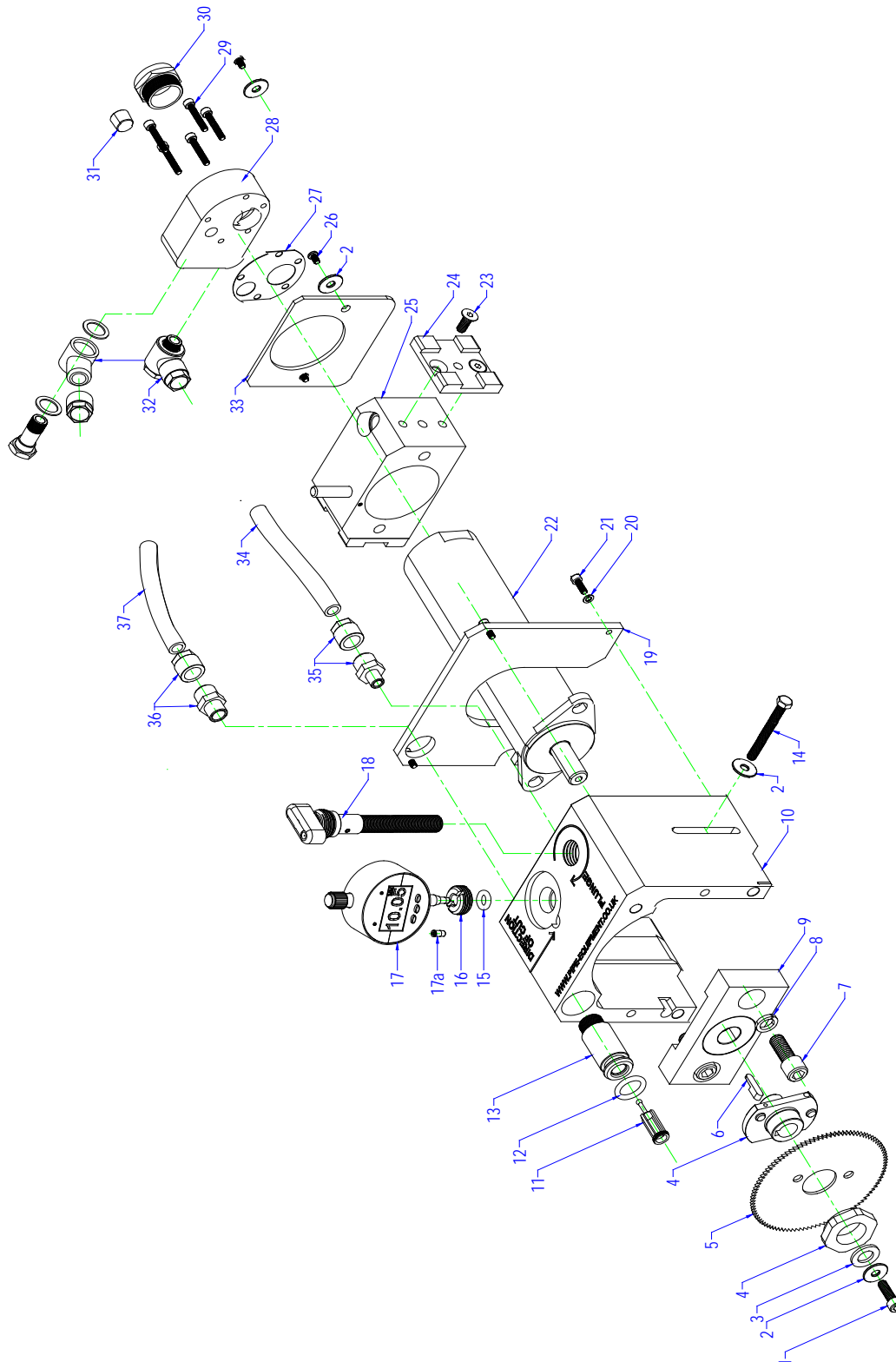
- A blowgun is included with the kit to aid maintenance. It should be used after every operation to remove any swarf or debris from inside the cutter. Small pieces of abrasive swarf within the machine will reduce its performance and shorten the life of any moving components.
- It should be cleaned down after every use. The guide rails for the Longitudinal cut need to be cleaned and lubricated with a light aerosol spray.
- Checking of the blade before and after every cutting operation is crucial. Using a worn or damaged blade will lower the cutting performance. Before every cut, the blade should be inspected for signs of warping, missing teeth and dulling of the teeth edges.
- Check the filter lubricator and air system ensure that the lubricator is full and dispensing the correct amount of oil, follow all steps outlined in the Kent Precision Window Cutter Operator Instructions section 5.1.



PARTS CATALOG

Components

Cutter Module Components



The company follow a policy of continuous product development and as such reserves the right to make alterations to equipment and techniques without prior notice.

Sole North American Distributor: PLCS Inc. 102 Gaither Drive, Unit 1, Mt. Laurel, NJ 08054

Page | 3

Tel #: 856-722-1333 email: info@plcsusa.com web site: www.plcsusa.com



PARTS CATALOG

Item	Part No.	Part Name	Qty
27	941145	Air Motor Manifold Gasket	1
28	941140	Air Motor Manifold	1
29	15904025SS	Cap Head Bolt M4 x 25mm SS	5
30	046019	Silencer - 3/4" BSP	1
31	149003	Plug - 1/8" BSP	1
32	114601	Hose Fitting – Banjo x 10mm OD PU Hose	2
33	941135	Guard Rubber Motor Block	1
34	941170	Cutter Module Lower Hose	1
35	114602	Hose Fitting – 1/8" BSP x 10mm OD PU Hose	1
36	114603	Hose Fitting – 1/4" BSP x 10mm OD PU Hose	1
37	941175	Cutter Module Upper Hose	1

Item	Part No.	Part Name	Qty
1	15906020SS	Cap Head Bolt M 6 x 20mm SS	1
2	20900618SS	Washer M6 x 18mm SS	4
3	069006	1/4" Rubber Backed Washer	1
4	941115	Blade Retaining Nut	1
5	944150	Kent Cutter Blade, Standard Kent Cutter Blade, Steel	1
6	941105	Blade Mount Assembly	1
7	15910025SS	Cap Head Bolt M10 x 25mm SS	2
8	209010SP	Spring Washers M10	2
9	941120	Motor Shaft Bearing Support Incl Bearing	1
10	941005	Cutter Housing	1
11	941155	Filter	1
12	399208	O-Ring	1
13	941150	Air Transfer Fitting	1
14	15906035SS	Cap Head Bolt M6 x 35mm SS	1
15	399203	O-Ring	1
16	941165	Depth Gauge Retention Insert	1
17	944140	Digital Depth Indicator (DDI)	1
17a	944145	DDI Extension	Opt
18	941015	Blade Plunge Assembly	1
19	941160	Back Plate	1
20	209004SP	Spring Washer M4	4
21	15904010SS	Cap Head Bolt M4 x 10mm	4
22	941075	Air Motor	1
23	16706016SS	Bolt C'Sunk M6 x 16mm SS	4
24	941055	Bearing Plate - Plunge Block	2
25	941045	Plunge Block Assembly	1
26	16606010SS	Pan Head Screw M6 x 10mm	2

The company follow a policy of continuous product development and as such reserves the right to make alterations to equipment and techniques without prior notice.

Sole North American Distributor: PLCS Inc. 102 Gaither Drive, Unit 1, Mt. Laurel, NJ 08054

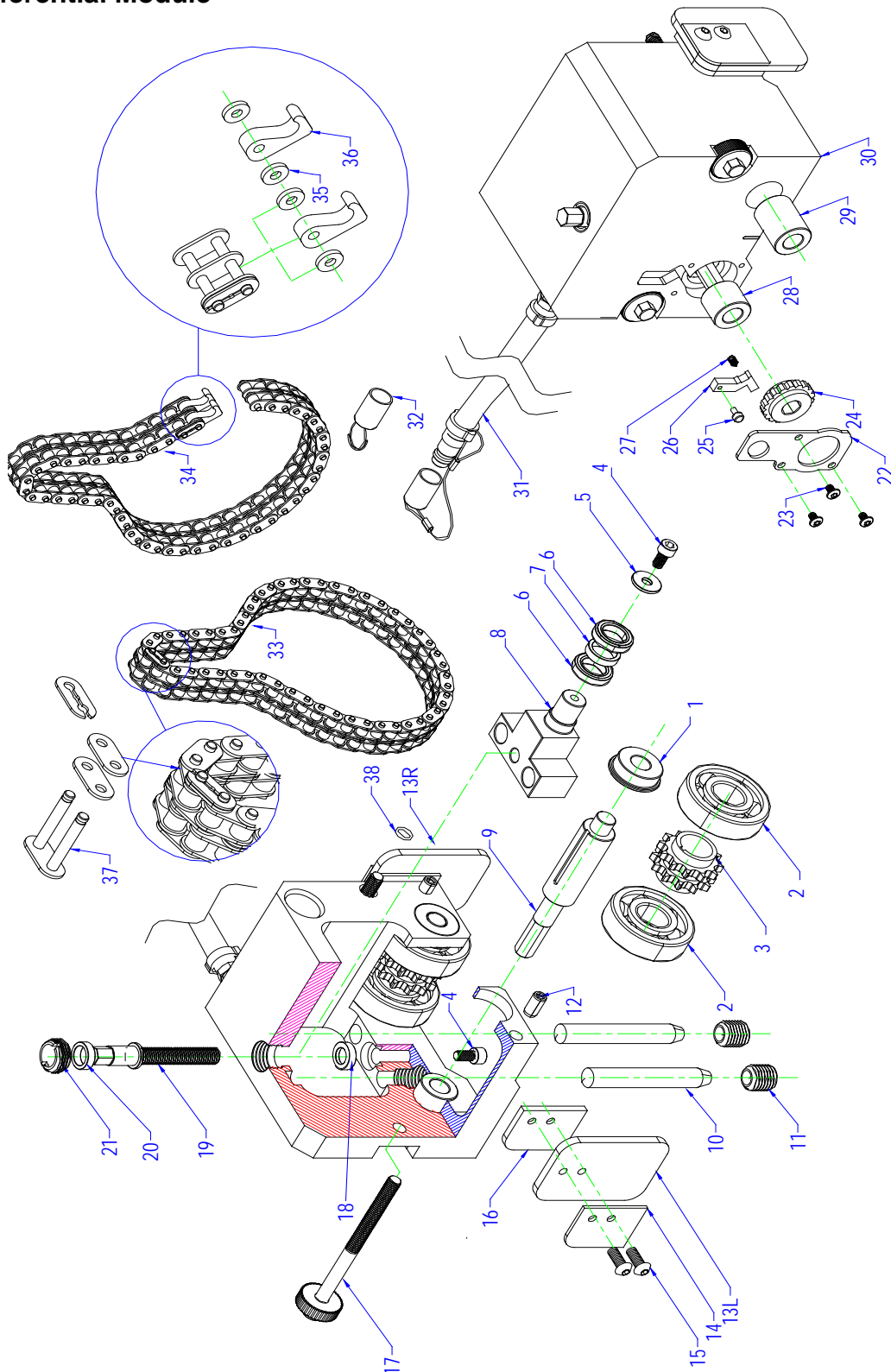
Page | 4

Tel #: 856-722-1333 email: info@plcsusa.com web site: www.plcsusa.com



PARTS CATALOG

Circumferential Module



The company follow a policy of continuous product development and as such reserves the right to make alterations to equipment and techniques without prior notice.

Sole North American Distributor: **PLCS Inc.** 102 Gaither Drive, Unit 1, Mt. Laurel, NJ 08054

Page | 5

Tel #: 856-722-1333 email: info@plcsusa.com web site: www.plcsusa.com



PARTS CATALOG

Item	Part No.	Part Name	Qty
27	943110	Spring	1
28	943085	Bush – Axle Short – Brass	1
29	943090	Bush – Axle Long – Brass	1
30	943010	Circumferential Housing	1
31	944005	Air Inlet Hose – 1m	1
32	944015	Rubber Cap – With Key ring	1
33		Chain, Continuous, C/W Split Link	Opt
34	944205	Chain, 8" Circumferential - C/W Hooks – STD	1
	944265	Chain, 12" Circumferential - Extension	Opt
	944270	Chain, 18" Circumferential - Extension	Opt
	944280	Chain, 24" Circumferential - Extension	Opt
35	944259	Nylon Washer	4
36	944255	Chain Hook	2
37	944250	Split Link	1
38	39900502	O-Ring	2

Item	Part No.	Part Name	Qty
1	943080	Bush – Top Hat	2
2	0335220	Bearing (Roller)	4
3	943055	Sprocket	2
4	15906012SS	Cap Head Bolt M6 x 12mm SS	1
5	20900618SS	Washer M6 x 18mm SS	1
6	0332415	Bearing – Chain Tensioner	2
7	943030	Spacer - Chain Tensioner	1
8	943025	Chain Adjustment Block	1
9	943095	Axle – Circumferential Drive	2
10	943035	Dowel – 12mm x 80mm – Extractable	2
11	17116016SS	Grub Screw M16 x 16mm	2
12	15508160EX	Dowel – 8mm x 16mm - Extractable	3
13L	943135	Guard Rubber – LHS	1
13R	943140	Guard Rubber – RHS	1
14	943150	Guard Plate Outer	2
15	16605012	Pan Head Screw M5 x 12mm	4
16	943145	Guard Plate Inner	2
17	943125	Thumb Bolt – Long	2
18	943045	Bush – Tensioner Spindle - Lower	1
19	943040	Spindle – Chain Tensioner	1
20	943050	Bush – Tensioner Spindle – Upper	1
21	941040	Insert – Spindle Retainer	1
22	943121	Ratchet Cover Plate	1
23	16104006SS	Button Head Socket Screw M4 x 6mm SS	3
24	943105	Ratchet Wheel	1
25	943120	Ratchet Knob1	1
26	943115	Ratchet Pawl	1

The company follow a policy of continuous product development and as such reserves the right to make alterations to equipment and techniques without prior notice.

Sole North American Distributor: PLCS Inc. 102 Gaither Drive, Unit 1, Mt. Laurel, NJ 08054

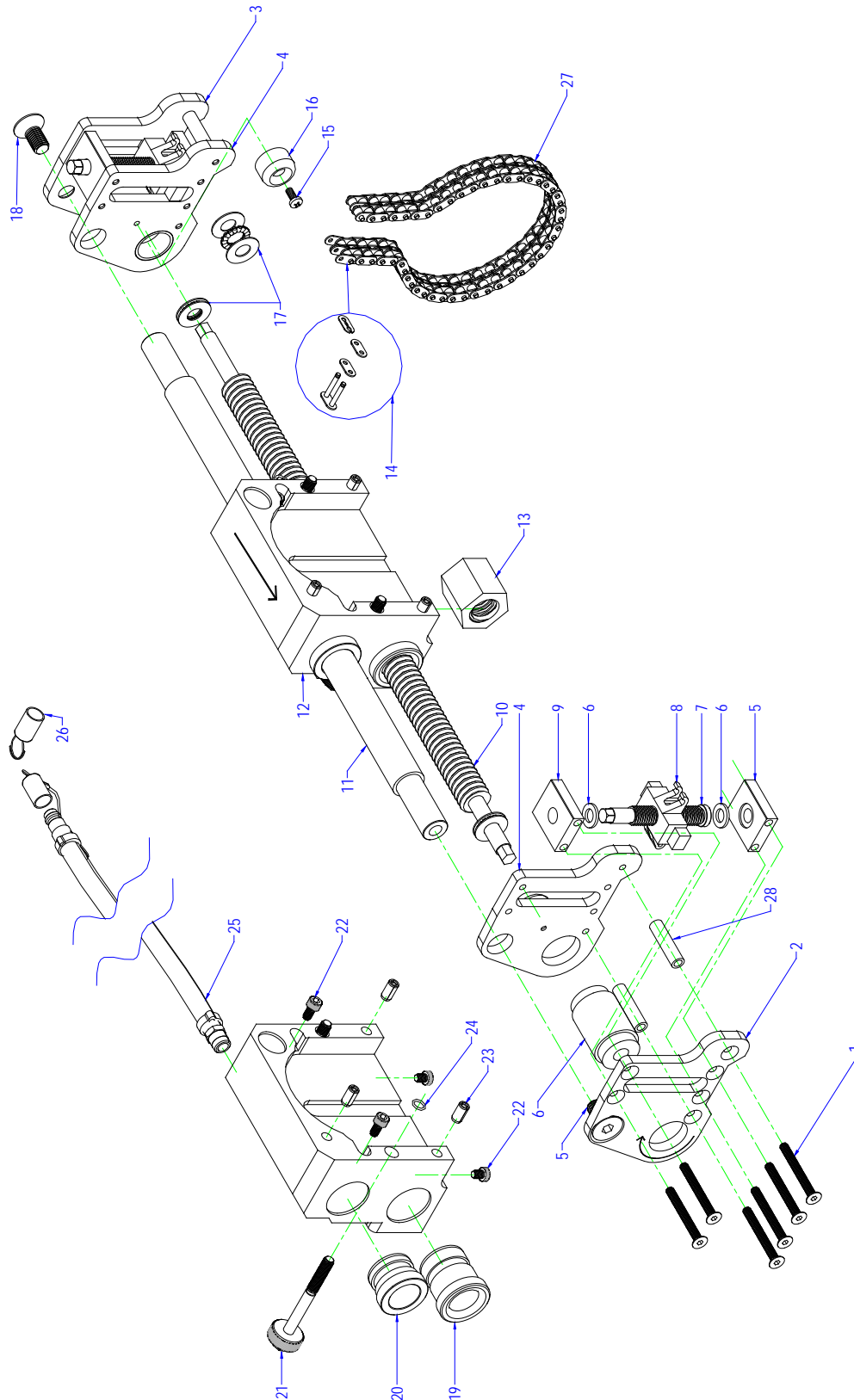
Page | 6

Tel #: 856-722-1333 email: info@plcsusa.com web site: www.plcsusa.com



PARTS CATALOG

Longitudinal Module



The company follow a policy of continuous product development and as such reserves the right to make alterations to equipment and techniques without prior notice.

Sole North American Distributor: **PLCS Inc.** 102 Gaither Drive, Unit 1, Mt. Laurel, NJ 08054

Page | 7

Tel #: 856-722-1333 email: info@plcsusa.com web site: www.plcsusa.com



PARTS CATALOG

Item	Part No.	Part Name	Qty
22	15906008LHSS	Cap Head Bolt M6 x 8mm Low Head SS	4
23	15508160EX	Dowel – 8mm x 16mm - Extractable	3
24	3990502	O-Ring	2
25	944005	Air Inlet Hose – 1m	1
26	944015	Rubber Cap – With Key ring	1
27	944250	Chain 8" Longitudinal – Standard	2
	944265	Chain 12" Longitudinal – Extension	Opt
	944270	Chain 18" Longitudinal – Extension	Opt
	944280	Chain 24" Longitudinal – Extension	Opt
28	942090	Spacer 10mm OD	4

Item	Part No.	Part Name	Qty
1	16706055S	Bolt C'Sunk Skt M6 x 55mm SS	12
2	942080	End Plate L/H (Outer)	1
3	942075	End Plate R/H (Outer)	1
4	942095	End Plate Threaded (Inner)	2
5	942060	Chain Tensioner Mounting – Lower	2
6	942045	Bush – Chain Tensioner – Brass	4
7	942035	Shaft – Chain Tensioner	2
8	942040	Chain Hanger	2
9	942055	Chain Tensioner Mounting – Upper	2
10	94230025	Drive Rail – 10" Cut	1
	94230040	Drive Rail – 16" Cut	Opt
	94230060	Drive Rail – 24" Cut	Opt
11	94220025	Guide Rail – 10" Cut	1
	94220040	Guide Rail – 16" Cut	Opt
	94220060	Guide Rail – 24" Cut	Opt
12	942010	Longitudinal Housing	1
13	942100	Linear Motion Nut	1
14	944250	Split Link	2
15	16605012	Pan Head Screw M5 x 12mm	2
16	942099	Rubber Buffer	2
17	417765	Thrust Bearing 12mm Bore (3Pc's, 2 x Washer/ Raceway, 1 x Bearing)	2
18	16712025S	Bolt C'Sunk Skt M12 x 25mm SS	2
19	942020	Bush – Static Rail - Brass	2
20	942025	Bush – Screw Rail - Brass	2
21	942105	Thumb Bolt - Short	2

The company follow a policy of continuous product development and as such reserves the right to make alterations to equipment and techniques without prior notice.

Sole North American Distributor: PLCS Inc. 102 Gaither Drive, Unit 1, Mt. Laurel, NJ 08054

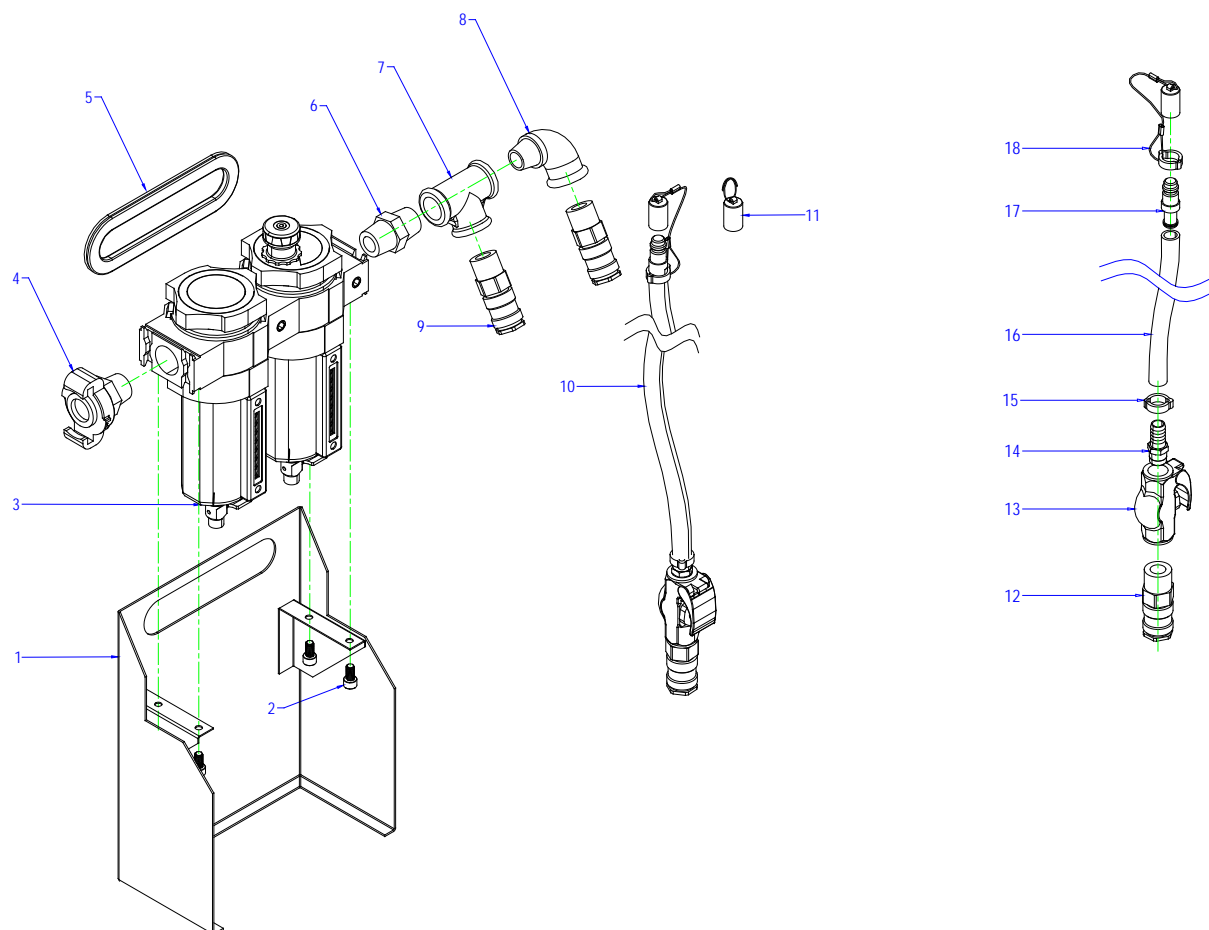
Page | 8

Tel #: 856-722-1333 email: info@plcsusa.com web site: www.plcsusa.com



PARTS CATALOG

Air Treatment System



Item	Part No.	Name	Qty
1	944050	Filter Lubricator Stand	1
2	15905010SS	Cap Head Bolt M5 x 10mm SS	4
3	120014m	Claw Coupling ½" BSP Male	1
4	132319N	Air Treatment Assembly	1
5	944074	Beading	1
6	1451313G	½" Hex Nipple	1
7	1481313G	½" Tee	1
8	112213G	½" Elbow	1
9	125013	½" Quick Release Coupling	2
10	944020	Dead Man and Hose Assembly	1
11	944015	Rubber Cap C/W Key Ring	Opt

Item	Part No.	Name	Qty
12	125010	⅜" Quick Release Coupling	1
13	042010	Dead Mans Handle	1
14	1141010	⅜" Hose tail	1
15	047010	Hose Clip	1
16	10814510	PU Hose 14.5mm OD / 10mm ID	3m
17	124010H	Quick Release Tail	1
18	944010	Rubber Cap C/W Lanyard	1

The company follow a policy of continuous product development and as such reserves the right to make alterations to equipment and techniques without prior notice.

Sole North American Distributor: PLCS Inc. 102 Gaither Drive, Unit 1, Mt. Laurel, NJ 08054

Page | 9

Tel #: 856-722-1333 email: info@plcsusa.com web site: www.plcsusa.com