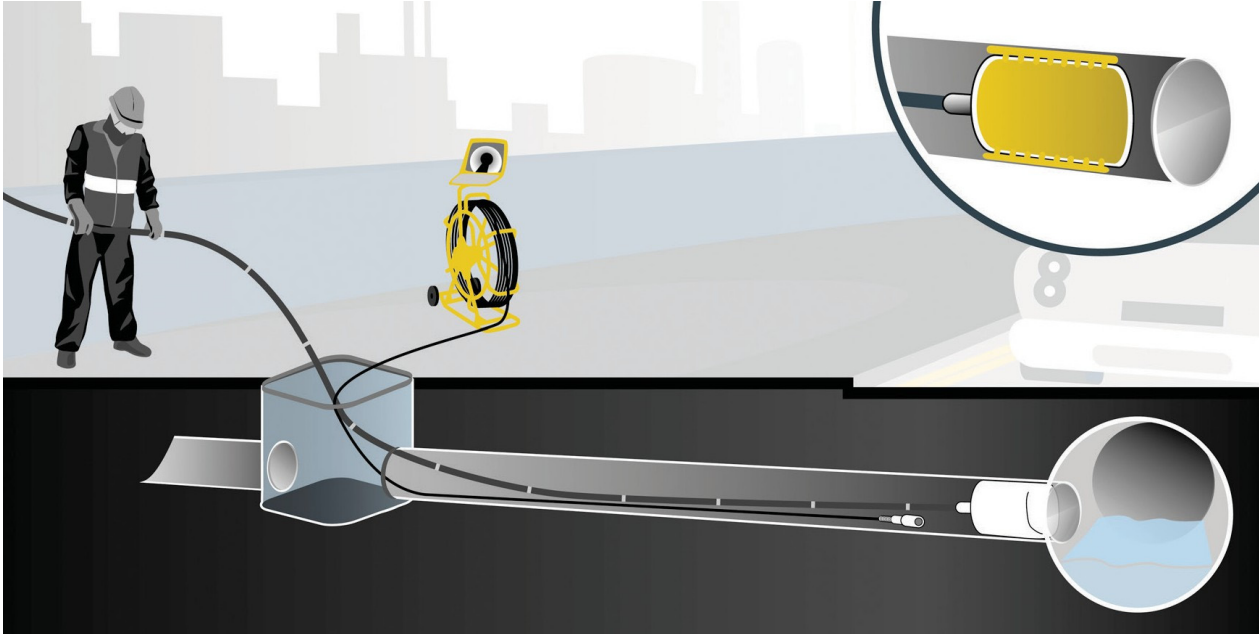


DRAINBLOCK

A technique for remotely sealing off the unused drain and sewer laterals.

The DRAINBLOCK BAG™ is based on the highly successful FOAMBAG™ system which is widely used and well proven for flow stopping in the gas distribution industry.



DRAINBLOCK is semi-porous bag containing a sealed sachet of PU resin foam positioned at inside a lateral drain or sewer meets the parent main. At full expansion, some of the foam seeps through the bag to adhere to the inner walls of the pipe to form a permanent plug. The lateral is accessed at a non-sensitive location.

BENEFITS

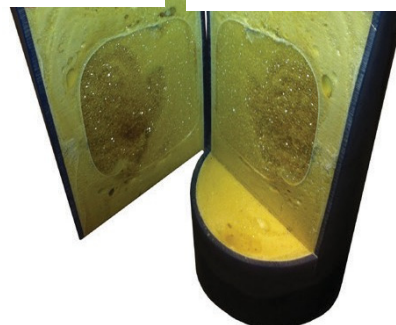
- Avoids excavating in the road.
- Can be install up to 50 feet from the point of access.
- Prevents groundwater from entering sewers.
- Avoids unauthorized connection to clean water drainage systems via unused laterals.
- No risk of sealing material entering the main.
- Easy to use – available in kit form.
- Once mixed, the PU foam is inert and is disposed in the regular waste.



A.) Bag in a pipe during the start of expansion.



B.) At full expansion, some foam seeps through to seal the pipe.



C.) Pipe cut in half to show the cured foam.

PLCS, LLC

102 Gaither Drive, Unit 1, Mount Laurel, NJ 08054

phone: (856) 722-1333 • fax: (856) 273-9723 • e-mail: info@plcsusa.com • web: www.plcsusa.com

DRAINBLOCK

SPECIFICATION



Use on abandoned clay, concrete, metal, and plastic pipes. Ideal for contractors, water and sewerage companies, facility managers, and maintenance teams. Prevents the ingress/egress of water and stops the passage of odor.

Supplied in a convenient kit form with everything required to carry out the sealing operation such as an outer bag, FOAMPACK™ sachet and piercing knife.

- 4" Kit Part# 72-FK230
- 6" Kit Part # 72-FK231
- 4"/6" Non Porous Dam. Part# 72-FK232
- Other dimensions are made to special order.

METHOD

A camera inspection can locate a suitable position for the DRAINBLOCK BAG™.

1. The two-part resin foam is mixed in the FOAMPACK™ sachet.
2. Zipped into the restraining bag together with the piercing knife.
3. These are all placed in the outer DRAINBLOCK BAG™ and the zip closed.
4. Duct rods are attached to the nylon tube on the bag and pushed into position with the camera's aid.



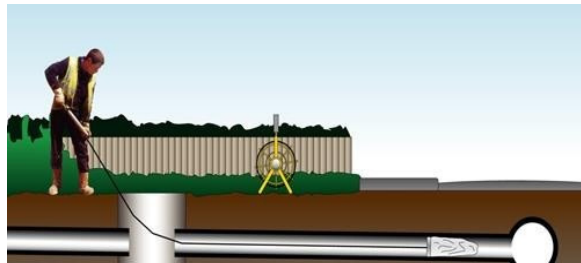
1.



2.



3.



4.

FAQ

How do you prevent the possibility of the foam spilling into the sewer main if set too close to lateral/main connection? If you plan on positioning the system closer than 10" to the connection, we can add a non-porous dam system to the front of the DRAINBLOCK bag prevents the foam from over-spilling forward. It does not affect the system's ability to seal. The system generates a seal length of 12" -14".

Can the DRAINBLOCK hold back grout like a dam in order to complete the lateral abandonment process? Yes. Testing was carried out on a plastic drain pipe and a weight of 11,023lbs (5000kg) was successfully applied to a cured DRAINBLOCK bag via a hydraulic jack and load cell with no adverse effects. Many customers use the system for exactly this.

What is the shelf life? 18 months

PLCS, LLC

102 Gaither Drive, Unit 1, Mount Laurel, NJ 08054

phone: (856) 722-1333 • fax: (856) 273-9723 • e-mail: info@plcsusa.com • web: www.plcsusa.com