

## INSTRUCTIONS

# DRAINBLOCK™ BAG KIT FOR PERMANENTLY SEALING LATERALS AND DUCTS

Please read ALL instructions

---

**STORAGE: Protect kits from extremes of temperature. Storage must be in a frost-free environment. DO NOT store in direct sunlight.**

## CHECKLIST

### Kit contents:

- 1 x Drainblock™ bag (Outer)
- 1 x Drainblock™ bag (Restraining inner bag)
- 1 x Steel piercing knife
- 1 x Foampack™ foil sachet
- 1 x Pair of protective gloves
- 1 x Waste disposal bag
- 1 x Instruction Leaflet

## PREPARATORY PROCEDURES

The lateral or pipe must be cleaned using high pressure water jetting to ensure the removal of substances such as silt, grease or fat that could affect the seal between the Drainblock™ bag and the host pipe.

A video inspection is required to ensure that there are no obstructions (tree roots, protruding laterals etc) in the pipe line that could hinder the installation. It is also used to determine a suitable target installation point for the Drainblock™ bag.

The Drainblock™ bag should be installed in structurally sound pipe as close as possible to the discharge into the downstream sewer/drain. The Drainblock™ bag should NOT be installed in sections of pipe that have cracks, missing wall sections nor should it be installed over a lateral connection. The Drainblock™ bag must not protrude beyond the host pipe into the downstream drain when it has cured.

Consideration should be given to the working space at the installation point. Space may be limited and could prevent the drain rods from being fully assembled pre Drainblock™ bag insertion.

Select the correct size Drainblock™ bag kit to correspond to the diameter of pipe to be sealed.

LATERAL OR DUCT DIAMETER	FOAM SACHET VOLUME
6" / 150mm	27 oz / 800ml
4" / 100mm	14 oz / 400ml

## DRAINBLOCK™ PROCEDURE

**NOTE: The Drainblock™ bag is a PERMANENT seal and is not designed to be removed.**

1. Open Drainblock™ bag and remove restraining inner bag and piercing knife.
2. Open inner restraining bag ready to receive the mixed Foampack™ sachet and remove knife.
3. The safety gloves provided in the kit should now be worn.
4. Check that it is in date. This information is printed on the front of the sachet. If the sachet is out of date then do not use it.
5. Remove foil outer of Foampack™ sachet.
6. Check the temperature of the sachet on the temperature strip. The temperature strip must read between 50°F and 80°F to use.

**NOTE: It is the temperature of the resin within the sachet that is critical and not the ambient air temperature. DO NOT use the foam sachet if it is not within the required temperatures. The sachet can be gently warmed in a vehicle's cabin or cooled in a bucket of water. DO NOT apply a flame or leave under a vehicle exhaust.**

7. Remove the resin/hardener dividing strip.
8. Remove inner foil casing.

**CAUTION: Once dividing strip on the sachet has been removed the foam will activate. If for any reason you are unable to complete the job, cut the sachet, place it into the waste disposal bag and take to a safe area**

9. Within the bag vigorously mix the hardener and resin together for 30 – 45 seconds ensuring that the contents have been blended into one color with no unmixed material.

With the resin between 50-60°F you have **5 minutes** to rod the Drainblock™ bag into the correct position.

10. Squeeze all the sachet contents to the bottom of the sachet and roll or fold down the empty sachet section to make it as small as possible.
11. Open the inner bag and insert the sachet into the restraining inner bag.
12. Insert piercing knife into restraining inner bag with points of the knife facing the sachet.



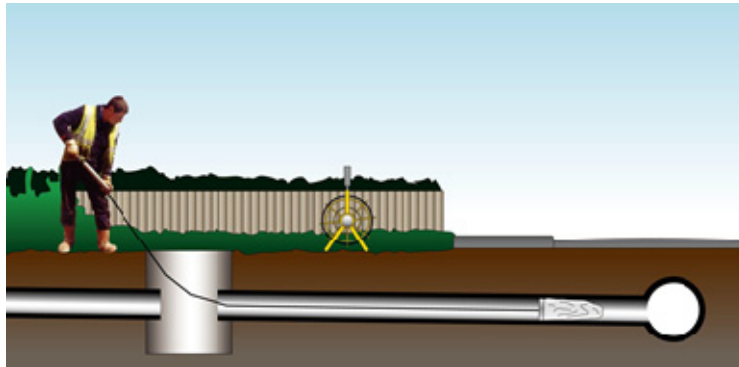
13. Close the inner restraining bag with the zip and insert it into the Drainblock™ bag. Close the Drainblock™ bag with the zip.

14. Attach drain rods to the Drainblock™ bag to the clear PVC cup.



15. Push Drainblock™ bag into the lateral to be sealed and rod into position.

16. Allow the bag to cure for 30 minutes before removing the drain rods. The rods are disconnected from the bag by a sharp tug and twist of the rod.



### **Optional extra**

Expanding foam or grout can now be used to fill the duct or lateral behind the Drainblock™ bag's position.

### **ABORTED INSTALLATIONS**

If for any reason a Drainblock™ bag is deemed as unsuccessful it is possible to install another Drainblock™ bag directly behind the original.

**DISPOSAL: Place all consumables in the waste bag for disposal in line with current environmental policy.**

**HEALTH AND SAFETY: Please refer to the labels on the sachet for correct handling procedures. Wear all protective clothing supplied.**