

Rapid Service Isolator

A safe gas-free method to rapidly cut 3/4"-1 1/4" metallic low-pressure services for emergency shut-downs, "cut and cap" operations, or PE branch insertion renewal.



The compact system uses a simple vice-grip clamp with an attached mini-valve and drill bit entry-gland fitting.

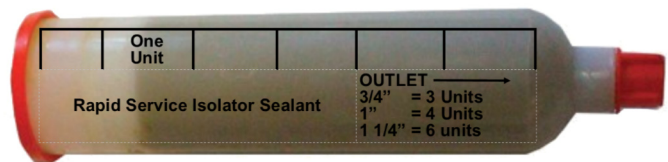
The tool drills a 3/16" access hole into the pipe to provide entry for the premeasured injectable inert sealant into the branch, stopping the gas flow.

BENEFITS

- Stop live services in less than 5 minutes. Use for third-party damage shut-down.
- Modified jaw locking pliers fit vertical and horizontal pipes.
- Use on straight pipe, bends, elbows, and sockets.
- The service is cut immediately after sealant injection.
- The sealant is inert, so no health or handling hazards.
- Operators can reuse partially filled tubes—no wasted sealant.
- The sealant crumbles if it accidentally enters the main results in little or no flow interference.



Compact fabric carrier kit has everything to perform live service stop-off.



Sealant tubes are premeasured marked with quantities required for each service diameter.

3/4" = 3 units, 1" = 4 units, 1 1/4" = 6 units

6 units per tube.

10 tubes complete 15 x 1" services.

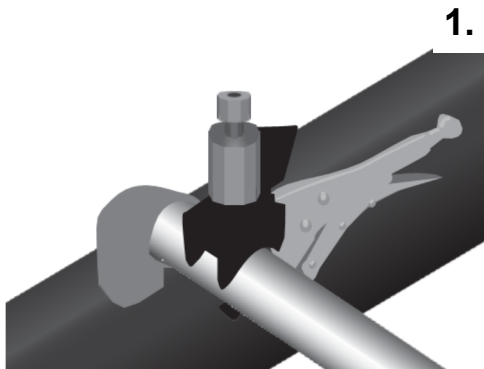
2 year shelf life.

PLCS, LLC

102 Gaither Drive, Unit 1, Mount Laurel, NJ 08054

phone: (856) 722-1333 • fax: (856) 273-9723 • e-mail: info@plcsusa.com • web: www.plcsusa.com

Rapid Service Isolator Instructions

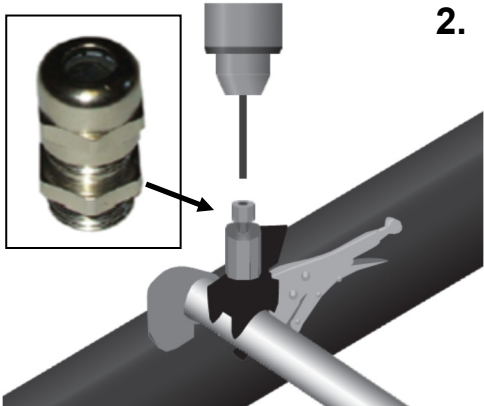


1.

Attach the jaw locking pliers with a built-in valve and rubber seal to the service pipe at the desired location.

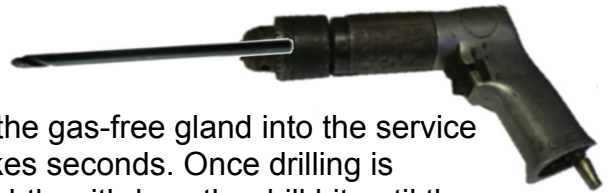


The tool works on vertical and horizontal pipes.



2.

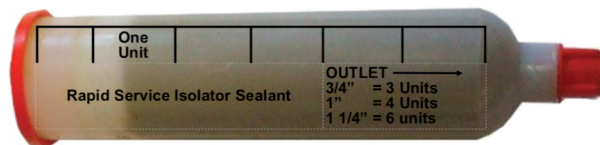
Drill through the gas-free gland into the service pipe. This takes seconds. Once drilling is complete, slightly withdraw the drill bit until the valve closes. Remove the gland and attach the barrel nipple.



3.

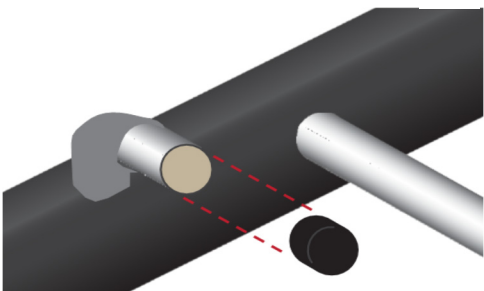
Tighten the sealant tube onto the barrel nipple, then slide the applicator gun over the tube.

Open the valve and inject the correct amount of sealant. Indicator marks are on the tube.



4.

3/4" = 3 units, 1" = 4 units, 1 1/4" = 6 units



Any sealant that remains inside the tube is resealed for later use by tightening the small-cap onto the tube before storage. Test for a gas-tight seal, then cut through the service—complete abandonment operations according to company procedures.

PLCS, LLC

102 Gaither Drive, Unit 1, Mount Laurel, NJ 08054

phone: (856) 722-1333 • fax: (856) 273-9723 • e-mail: info@plcsusa.com • web: www.plcsusa.com