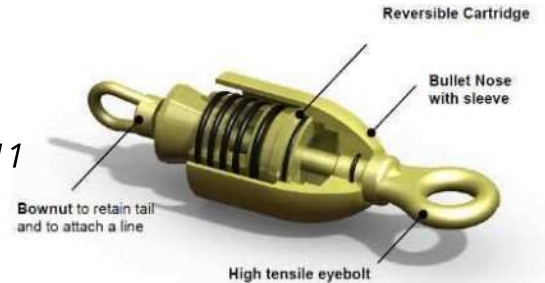


# PE Pipe Handling: 2. Mudtight Gold HDD Pipe Puller



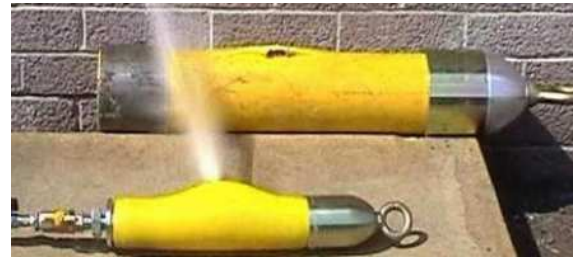
A PE pipe puller specifically designed for Horizontal Directional Drilling (HDD), Molding and Pipe Bursting offering a direct connection to the leading end of HDPE or MDPE pipe. Seals the pipe from debris ingress as it travels through the bore hole for water pipe, gas pipe and duct installation.

*The unique feature is the patented three-part reversible cartridge. This allows one puller to seal both SDR 11 and SDR 17.6 wall thickness pipe using a reversible sealing cartridge.*



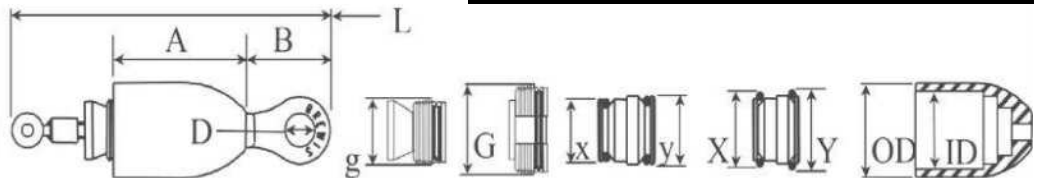
## Advantages

- Saves time and money.
- Simple installation.
- Proven reliability and tough design.
- No need to use duct tape or foam pig.



*Tested to the point of pipe failure without release.*

*Greater the pull, the greater the grip.*



| Photo | Part#      | Size  |         | L<br>Overall Length | A<br>Nose Length | B<br>Eyebolt Length | D<br>Eye Ø   | g<br>Min. Grip | G<br>Max. Grip | x<br>Min. Seal Ø | X<br>Max. Seal Ø     | y<br>Min. Seal Ø | Y<br>Max. Seal Ø | OD<br>Outside Ø | ID<br>Inside Ø | WT.<br>LBS |
|-------|------------|-------|---------|---------------------|------------------|---------------------|--------------|----------------|----------------|------------------|----------------------|------------------|------------------|-----------------|----------------|------------|
|       |            | IPS   | mm inch |                     |                  |                     |              |                |                |                  |                      |                  |                  |                 |                |            |
|       | 71-416001  | 1.25" | mm inch | 200<br>7.87         | 84.0<br>3.31     | 55.0<br>2.17        | 19.5<br>0.77 | 30.0<br>1.18   | 42.7<br>1.68   | 30.9<br>SDR      | 35.0<br>9.33-11.0    | 34.3<br>SDR      | 38.7<br>13.5     | 49.7<br>1.96    | 42.7<br>1.68   | 2.2        |
|       | 71-416002  | 1.5"  | mm inch | 205<br>8.07         | 89.0<br>3.50     | 55.0<br>2.17        | 19.5<br>0.77 | 35.3<br>1.39   | 48.8<br>1.92   | 37.2<br>SDR      | 42.5<br>11-13.5      | 40.4<br>SDR      | 45.1<br>17       | 55.8<br>2.20    | 48.8<br>1.92   | 2.6        |
|       | 71-416003  | 2"    | mm inch | 250<br>9.84         | 115<br>4.53      | 58.0<br>2.28        | 29.5<br>1.16 | 42.7<br>1.68   | 60.9<br>2.40   | 44.4<br>SDR      | 50.0<br>9.33-11      | 51.3<br>SDR      | 56.0<br>17-21    | 67.9<br>2.67    | 60.9<br>2.40   | 5.0        |
|       | 71-416005  | 3"    | mm inch | 354<br>13.94        | 163<br>6.42      | 106.0<br>4.17       | 38.1<br>1.50 | 64.8<br>2.55   | 89.5<br>3.52   | 66.4<br>SDR      | 74.9<br>9.33,11,11.5 | 73.0<br>SDR      | 81.7<br>13.5-21  | 98.1<br>3.86    | 89.5<br>3.52   | 13.22      |
|       | 71-416006  | 4"    | mm inch | 380<br>14.96        | 163<br>6.42      | 106.0<br>4.17       | 38.1<br>1.50 | 84.2<br>3.31   | 114.9<br>4.52  | 85.6<br>SDR      | 96.3<br>9.33,11,11.5 | 94.1<br>SDR      | 104.8<br>13.5-21 | 123.9<br>4.88   | 114.9<br>4.52  | 20.0       |
|       | 71-4160018 | 6"    | mm inch | 520<br>20.47        | 270<br>10.63     | 149.0<br>5.87       | 45.0<br>1.77 | 132.0<br>5.20  | 170.0<br>6.69  | 131.7<br>SDR     | 144.8<br>11-13.5     | 143.8<br>SDR     | 156.0<br>17-21   | 183.0<br>7.20   | 170.0<br>6.69  | 48.50      |
|       | 71-4160019 | 8"    | mm inch | 555<br>21.85        | 290<br>11.42     | 149.0<br>5.87       | 45.0<br>1.77 | 170.5<br>6.71  | 223.5<br>8.80  | 171.0<br>SDR     | 187.0<br>11-13.5     | 187.0<br>SDR     | 204.0<br>17-21   | 240.0<br>9.45   | 223.5<br>8.80  | 77.0       |

## PLCS, LLC

102 Gaither Drive Unit 1  
Mount Laurel, NJ 08054  
(856) 722-1333 [www.plcsusa.com](http://www.plcsusa.com) [info@plcsusa.com](mailto:info@plcsusa.com)