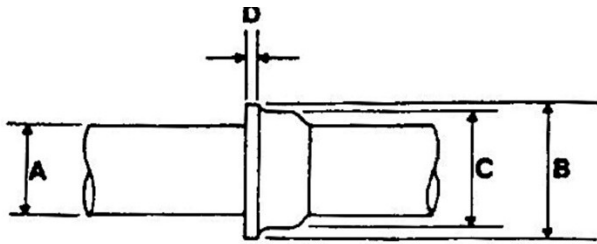


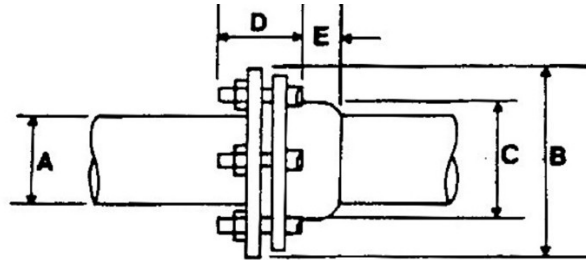
# PLCS Ordering Guide for Special Encapsulations

1. Provide the fitting type, size, material (e.g. cast iron, steel), and working pressure.
2. Email 2+ photos of the fitting from different angles to [info@plcsusa.com](mailto:info@plcsusa.com).
3. Using the drawings on the following pages, measure and record each lettered dimension in inches.
4. Measurements must be exact, do not oversize.
5. For circular parts, note whether measurements are diameter or circumference.
6. Note any obstructions that may interfere with mold placement.
7. Specify dry kit (standard) or wet kit (with sealant).
8. Include your name, company, job location, phone number, P.O. # or credit card, and shipping instructions.
9. If your fitting isn't shown in the drawings, provide a fully dimensioned sketch with all protrusions, lugs, and bolts, plus 2+ photos from different angles.

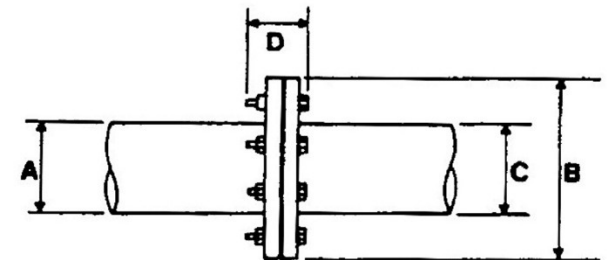
PLCS, LLC  
UNIQUE PRODUCTS FOR GAS DISTRIBUTION  
(856) 722-1333 [plcsusa.com](http://plcsusa.com)



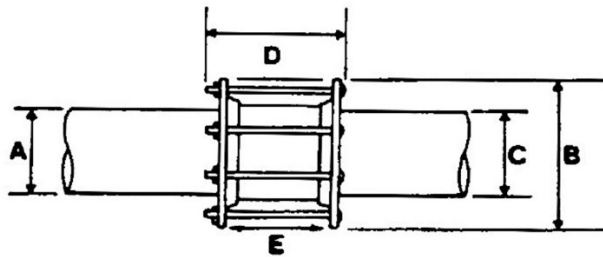
1. Bell Joint



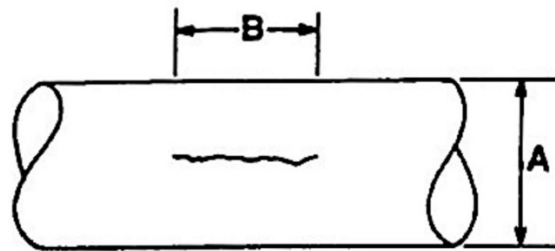
2. Mechanical Bell Joint



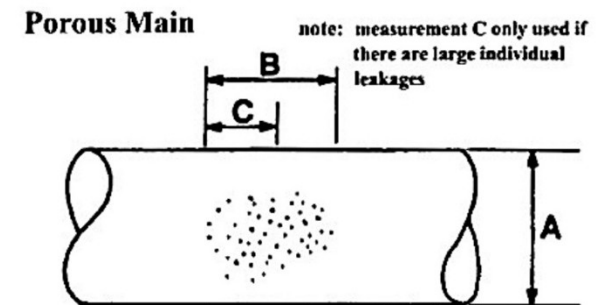
3. Bolted Flange



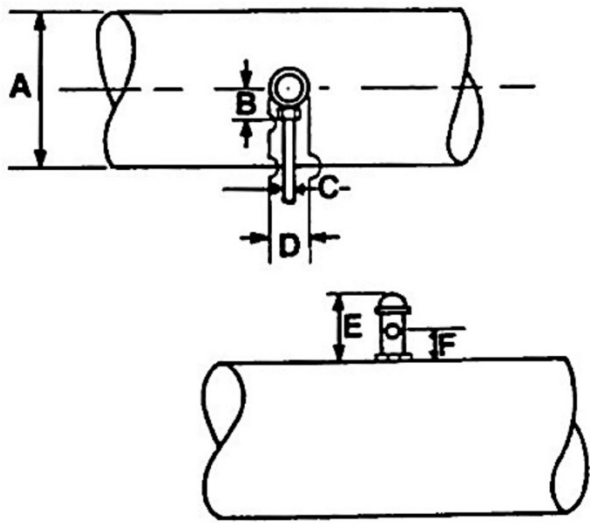
4. Coupling (i.e., Dresser, Smith-Blair)



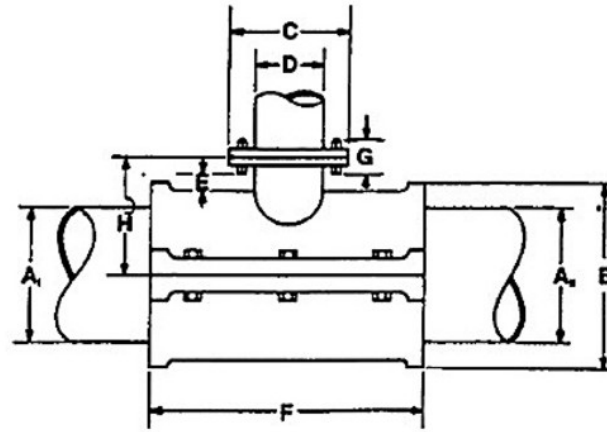
5. Longitudinal Split



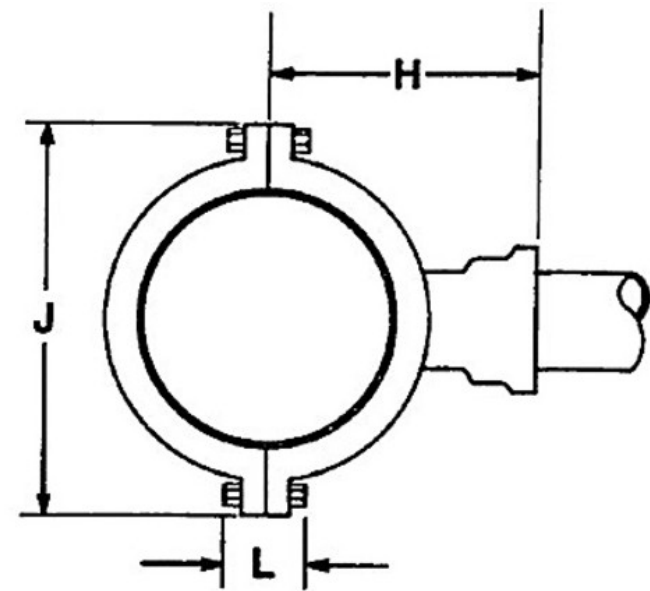
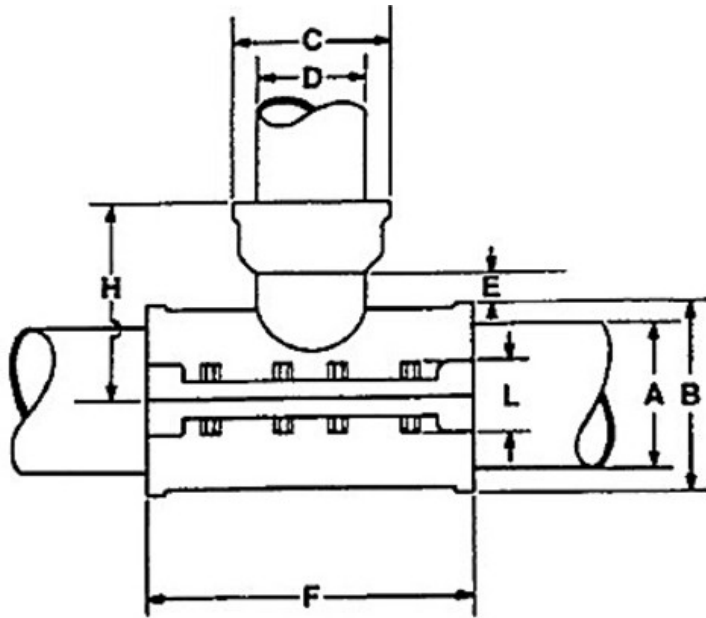
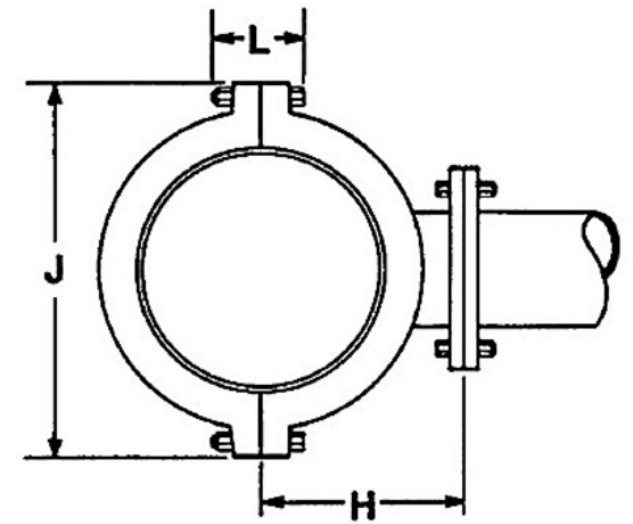
6. Porous Main



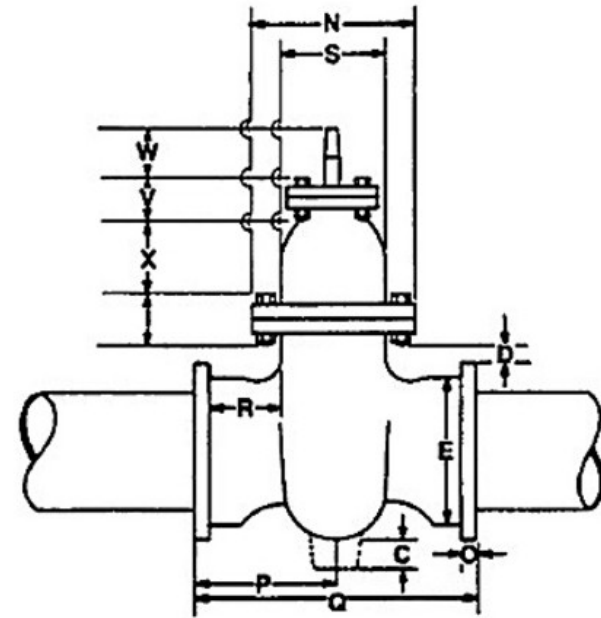
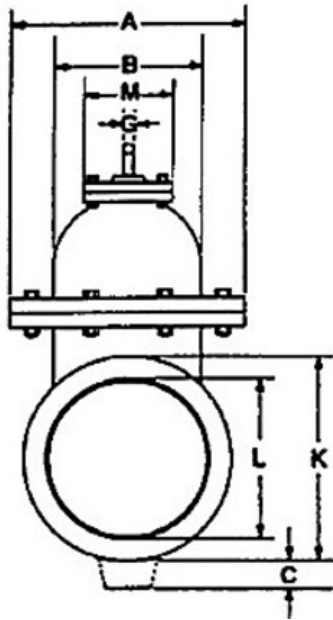
7. Service Tee



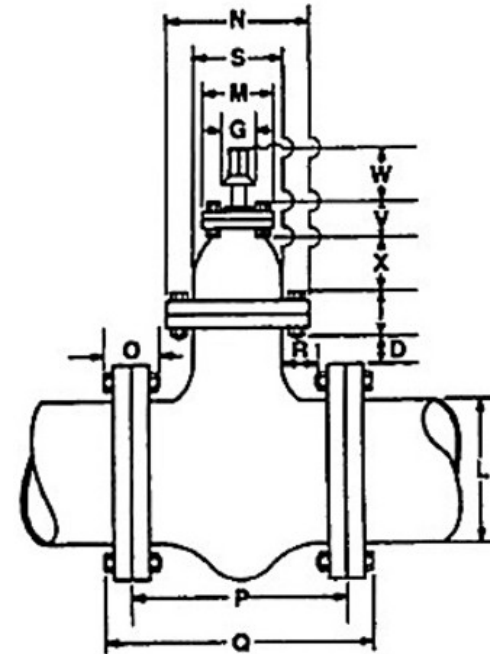
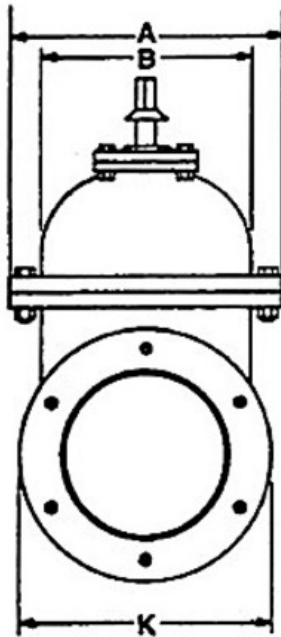
8. Tee Flange Branch



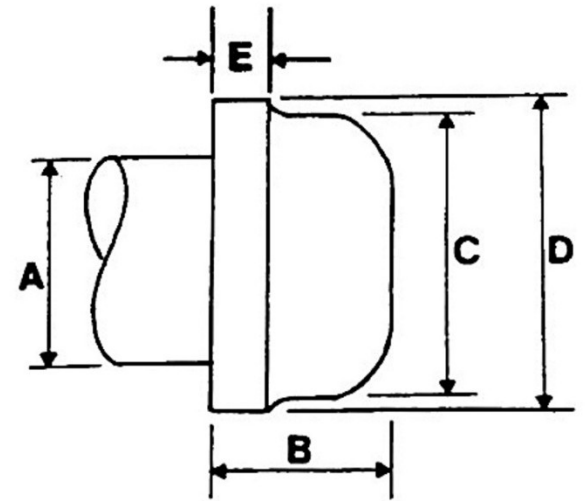
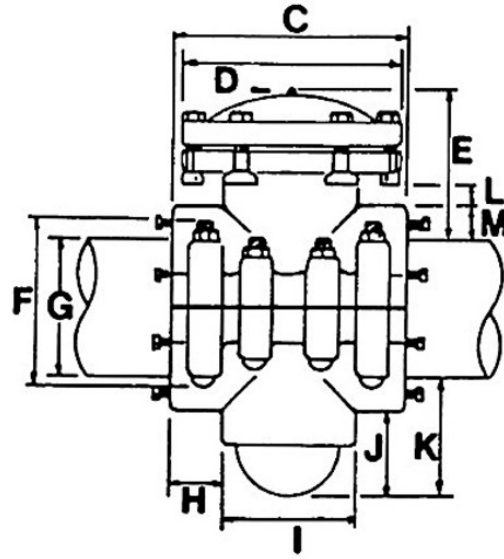
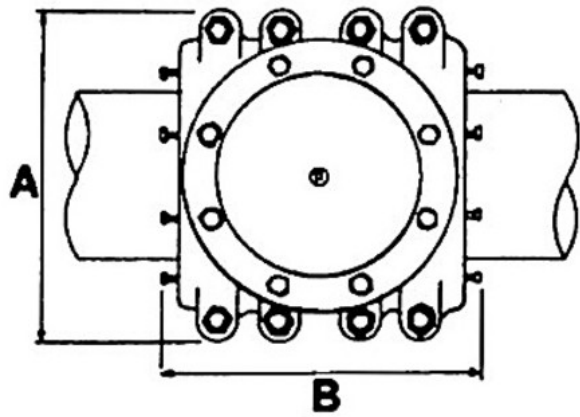
9. Tee Bell Joint Branch



10. Bell Joint Valve

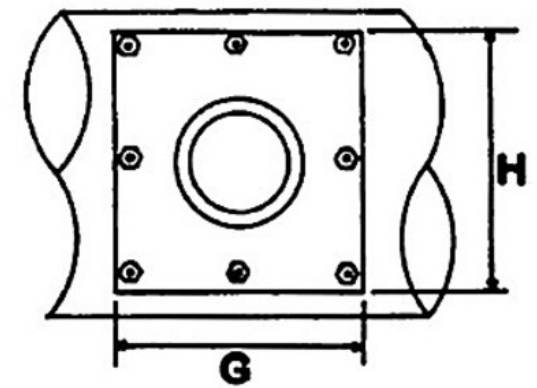
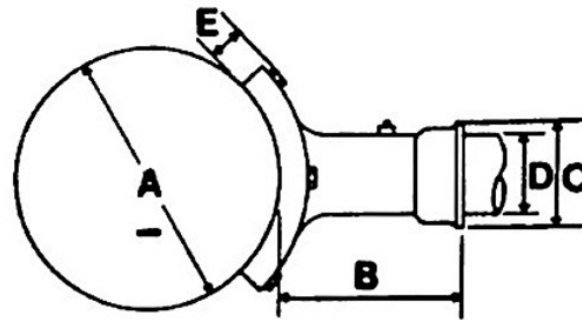
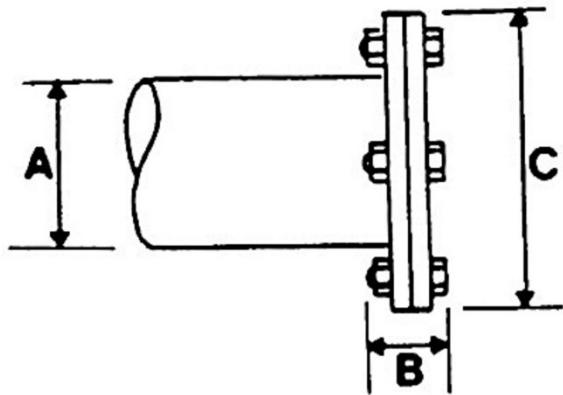


11. Flanged Valve



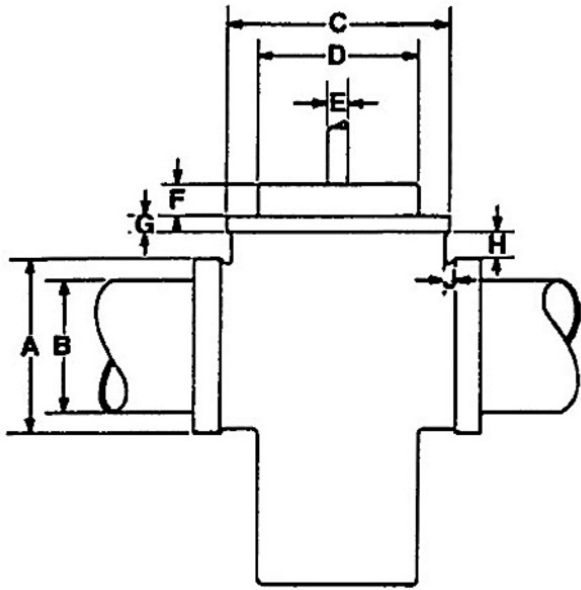
12. Pressure Control Fitting

13. Cap End

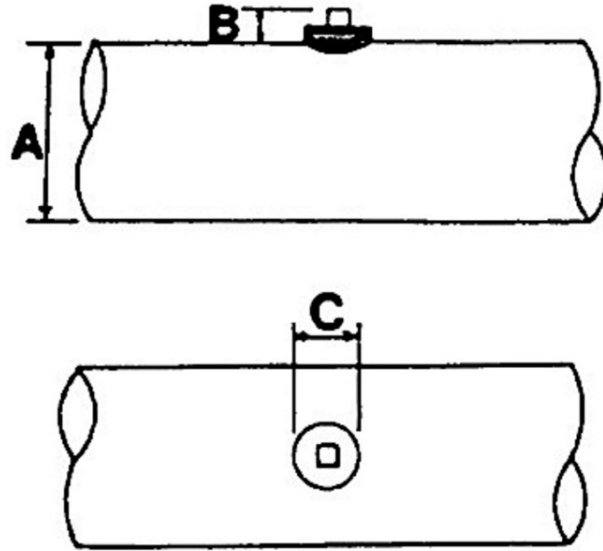


14. Flange End

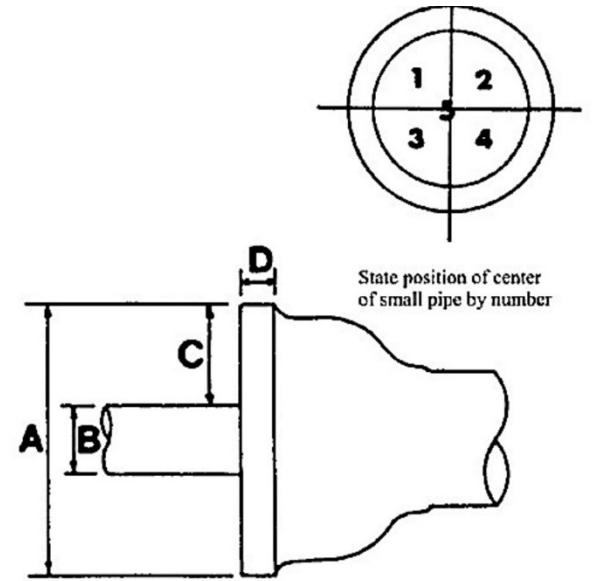
15. Saddle Branch



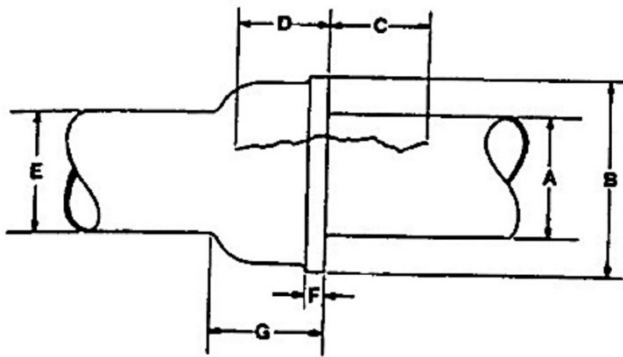
16. Syphon (Drip Pot)



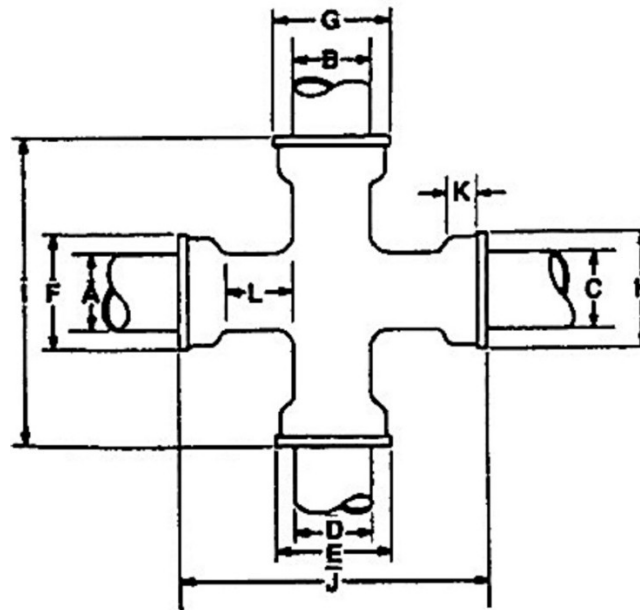
17. Plug



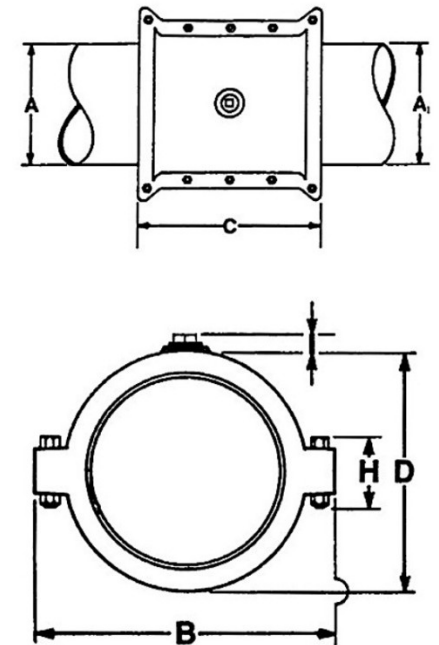
18. Reducing Bell Joint



19. Cracked Hub/Spigot

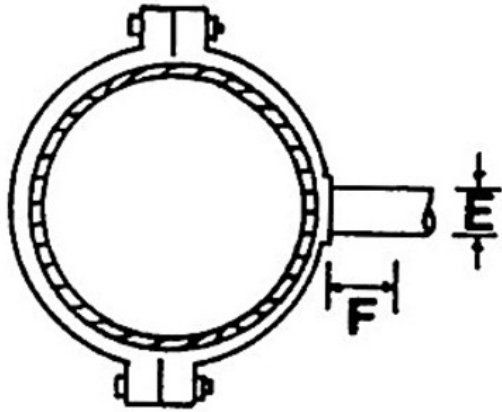


20. Cross

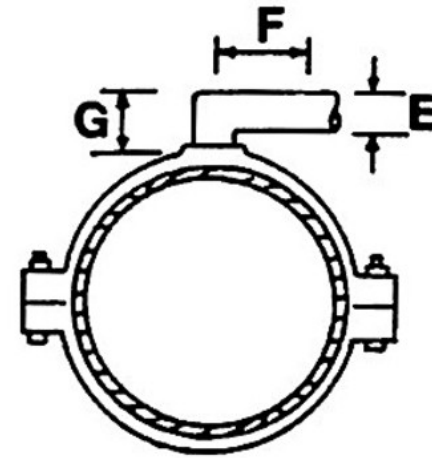


21. Split Sleeve

Side Outlet

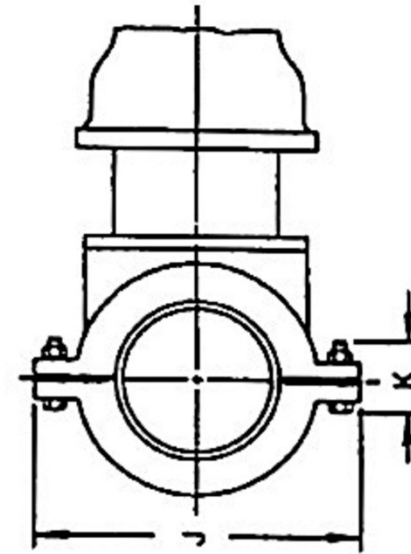
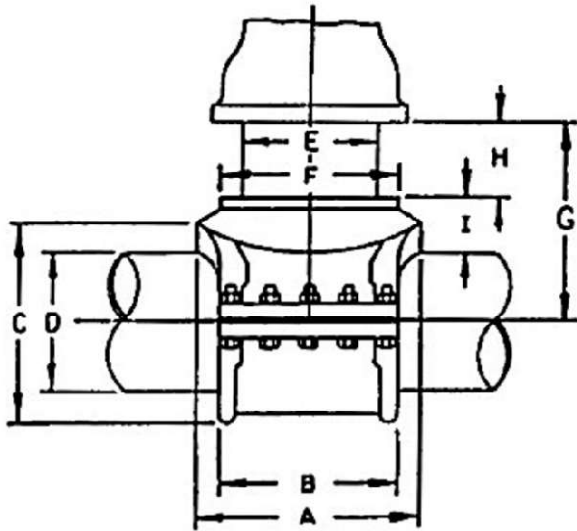


Top Outlet

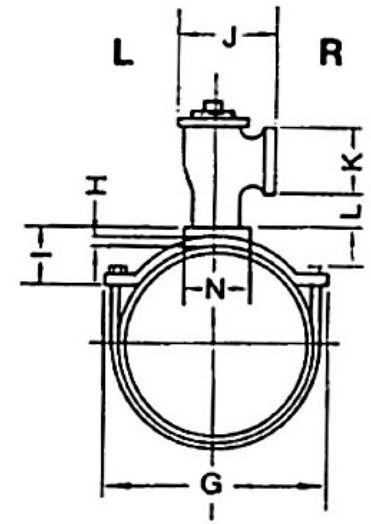
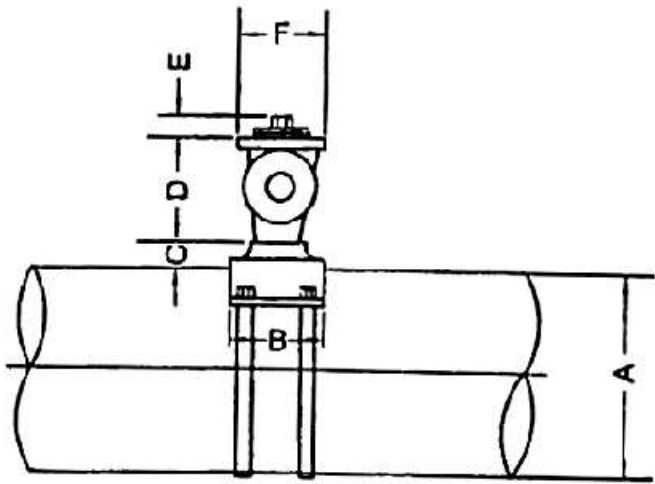


Include all other dimensions as split sleeve

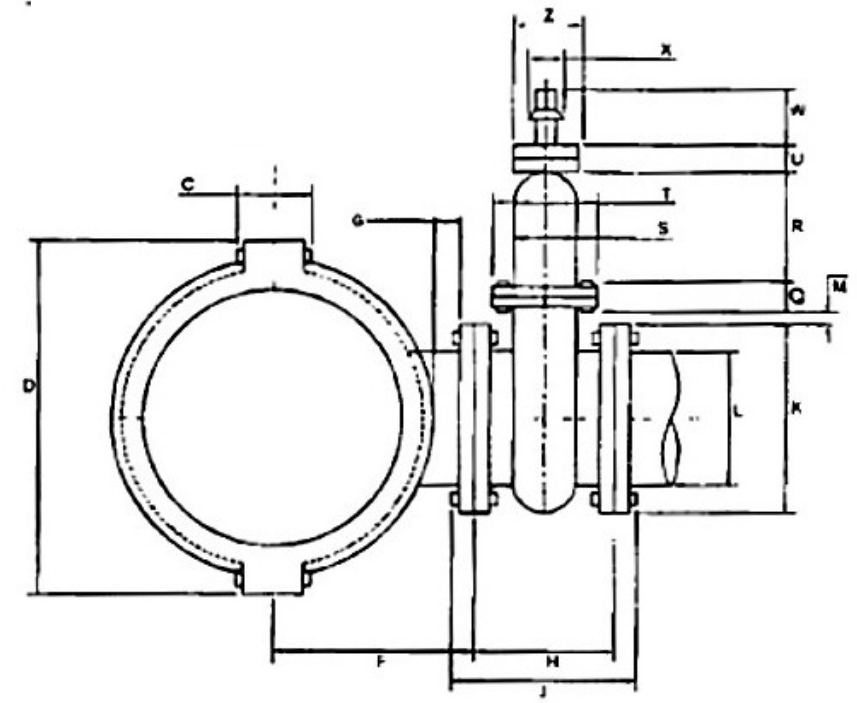
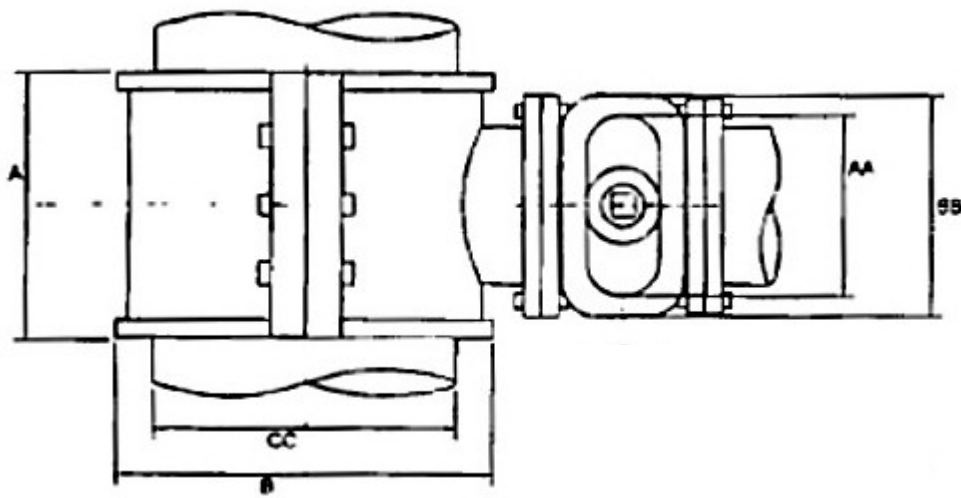
## 22. Service Sleeve



## 23. Smith Tapping Tee



24. Service Tee with Saddle (Note direction of branch. Circle R for right and L for left.)



25. Split Tee and Valve